

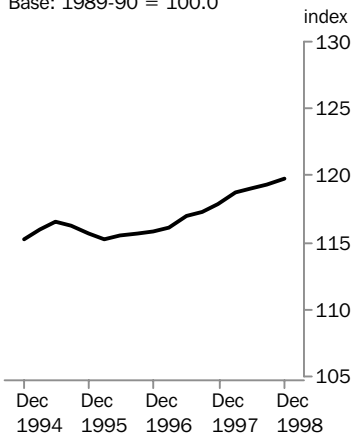
**PRICE INDEX OF MATERIALS
USED IN HOUSE BUILDING**

**SIX STATE
CAPITAL
CITIES**

EMBARGO: 11:30AM (CANBERRA TIME) THURS 21 JAN 1999

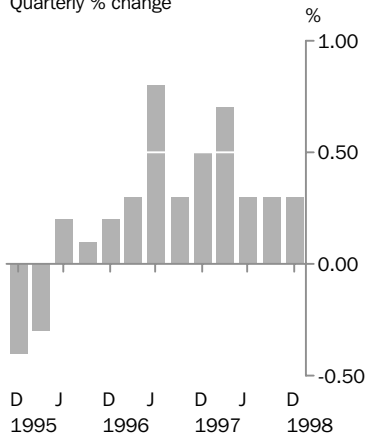
All groups

Base: 1989-90 = 100.0



All groups

Quarterly % change



DECEMBER QTR KEY FIGURES

	% change Sep Qtr 1998 to Dec Qtr 1998	% change Dec Qtr 1997 to Dec Qtr 1998
Weighted average of six State capital cities	0.3	1.5
Sydney	0.8	2.0
Melbourne	-0.4	1.3
Brisbane	0.2	1.6
Adelaide	0.6	1.9
Perth	0.2	0.4
Hobart	-0.2	1.4

DECEMBER QTR KEY POINTS

WEIGHTED AVERAGE INDEX

- The main contributors to the small increase in the index were due to increased prices for plaster products, cupboards and fittings and aluminium windows and doors.
- The increase was partly offset by decreases in prices for plastic pipes and fittings and ceramic tiles.

CAPITAL CITIES INDEXES

- Plaster product prices increased in all cities due mostly to manufacturers' price increases.
- Prices for cupboards and fittings increased in Sydney, Melbourne and Adelaide but decreased in Brisbane and remained unchanged in Perth and Hobart.
- Aluminium windows and doors prices rose in Sydney but decreased in Brisbane and Hobart and remained unchanged in Melbourne, Perth and Adelaide.
- Plastic pipes and fittings prices decreased in all cities.
- Prices for ceramic tiles decreased in Melbourne, Brisbane and Perth but increased in Sydney and Hobart while Adelaide remained unchanged.

- For further information about these and related statistics, contact Robert Adams on Canberra 02 6252 6198, or any ABS office shown on the back cover of this publication.

NOTES

FORTHCOMING ISSUES

ISSUE (Quarter)

RELEASE DATE

March 1999

22 April 1999

June 1999

22 July 1999



CHANGES IN THIS ISSUE

There are no changes in this issue.



RELATED STATISTICS

For more information about the statistics in this publication and the availability of related unpublished statistics, contact Robert Adams on fax (02) 6252 7060, or email robert.adams@abs.gov.au.



W. McLennan
Australian Statistician

HOUSE BUILDING MATERIALS PRICE INDEX(a)

<i>Period</i>	<i>Weighted average of six State capital cities</i>	<i>Sydney</i>	<i>Melbourne</i>	<i>Brisbane</i>	<i>Adelaide</i>	<i>Perth</i>	<i>Hobart</i>
1994-95	115.4	115.0	115.9	115.9	118.8	112.7	117.3
1995-96	115.7	115.9	115.4	115.1	118.2	114.8	120.7
1996-97	116.1	116.3	115.3	115.3	120.6	115.3	120.1
1997-98	118.2	119.7	117.1	117.1	123.3	115.9	121.0
1994							
December	115.2	114.8	115.6	116.0	118.8	112.1	116.6
1995							
March	115.9	115.5	116.5	116.2	119.4	113.1	117.9
June	116.5	116.1	117.0	116.6	118.8	114.2	119.5
September	116.2	116.4	115.9	116.3	118.4	115.0	120.8
December	115.7	115.6	115.3	115.5	118.0	114.9	120.8
1996							
March	115.3	115.5	115.1	114.4	118.0	114.6	120.7
June	115.5	116.2	115.1	114.0	118.3	114.6	120.6
September	115.6	115.9	114.9	114.4	119.6	115.0	120.5
December	115.8	115.8	115.2	114.8	120.4	115.0	119.8
1997							
March	116.1	116.0	115.1	115.4	120.8	115.3	120.1
June	117.0	117.3	115.8	116.5	121.5	115.8	120.1
September	117.3	117.8	116.1	116.8	122.4	116.0	120.3
December	117.9	119.4	116.6	116.7	122.9	115.8	120.6
1998							
March	118.7	120.8	117.6	117.0	123.7	115.7	121.2
June	119.0	120.7	118.0	117.9	124.1	115.9	122.0
September	119.4	120.8	118.6	118.4	124.4	116.1	122.5
December	119.7	121.8	118.1	118.6	125.2	116.3	122.3

(a) Base of each index: 1989-90 = 100.0

HOUSE BUILDING MATERIALS PRICE INDEX, Percentage Changes

Period	Weighted average of six State capital cities	Sydney	Melbourne	Brisbane	Adelaide	Perth	Hobart
		PERCENTAGE CHANGE (from previous year)					
1994-95	3.0	3.3	3.4	2.1	1.5	3.3	4.0
1995-96	0.3	0.8	-0.4	-0.7	-0.5	1.9	2.9
1996-97	0.3	0.3	-0.1	0.2	2.0	0.4	-0.5
1997-98	1.8	2.9	1.6	1.6	2.2	0.5	0.7
PERCENTAGE CHANGE (from corresponding quarter of previous year)							
1994							
December	3.1	3.7	3.5	2.3	1.4	3.3	4.0
1995							
March	3.1	3.7	3.4	2.2	1.0	3.7	4.3
June	2.8	3.0	3.0	2.1	0.3	3.6	4.6
September	1.8	2.5	1.3	1.5	0.1	3.2	4.8
December	0.4	0.7	-0.3	-0.4	-0.7	2.5	3.6
1996							
March	-0.5	0.0	-1.2	-1.5	-1.2	1.3	2.4
June	-0.9	0.1	-1.6	-2.2	-0.4	0.4	0.9
September	-0.5	-0.4	-0.9	-1.6	1.0	0.0	-0.2
December	0.1	0.2	-0.1	-0.6	2.0	0.1	-0.8
1997							
March	0.7	0.4	0.0	0.9	2.4	0.6	-0.5
June	1.3	0.9	0.6	2.2	2.7	1.0	-0.4
September	1.5	1.6	1.0	2.1	2.3	0.9	-0.2
December	1.8	3.1	1.2	1.7	2.1	0.7	0.7
1998							
March	2.2	4.1	2.2	1.4	2.4	0.3	0.9
June	1.7	2.9	1.9	1.2	2.1	0.1	1.6
September	1.8	2.5	2.2	1.4	1.6	0.1	1.8
December	1.5	2.0	1.3	1.6	1.9	0.4	1.4
PERCENTAGE CHANGE (from previous quarter)							
1994							
December	1.0	1.1	1.0	1.2	0.4	0.6	1.1
1995							
March	0.6	0.6	0.8	0.2	0.5	0.9	1.1
June	0.5	0.5	0.4	0.3	-0.5	1.0	1.4
September	-0.3	0.3	-0.9	-0.3	-0.3	0.7	1.1
December	-0.4	-0.7	-0.5	-0.7	-0.3	-0.1	0.0
1996							
March	-0.3	-0.1	-0.2	-1.0	0.0	-0.3	-0.1
June	0.2	0.6	0.0	-0.3	0.3	0.0	-0.1
September	0.1	-0.3	-0.2	0.4	1.1	0.3	-0.1
December	0.2	-0.1	0.3	0.3	0.7	0.0	-0.6
1997							
March	0.3	0.2	-0.1	0.5	0.3	0.3	0.3
June	0.8	1.1	0.6	1.0	0.6	0.4	0.0
September	0.3	0.4	0.3	0.3	0.7	0.2	0.2
December	0.5	1.4	0.4	-0.1	0.4	-0.2	0.2
1998							
March	0.7	1.2	0.9	0.3	0.7	-0.1	0.5
June	0.3	-0.1	0.3	0.8	0.3	0.2	0.7
September	0.3	0.1	0.5	0.4	0.2	0.2	0.4
December	0.3	0.8	-0.4	0.2	0.6	0.2	-0.2

HOUSE BUILDING MATERIALS PRICE INDEX(a), Contribution to All Groups Index

<i>Category</i>	<i>September Qtr 1998(b)</i>	<i>December Qtr 1998(b)</i>	<i>Change</i>
Weighted average of six State capital cities	119.4	119.7	0.3
GROUPS: Contribution to Weighted average of six State capital cities index (index points)			
Concrete mix, cement and sand	8.60	8.58	-0.02
Cement products	7.01	7.01	0.00
Ceramic products	16.30	16.28	-0.02
Timber, board and joinery	32.93	33.03	0.10
Steel products	5.70	5.77	0.07
Other metal products	19.01	19.10	0.09
Plumbing products	8.43	8.29	-0.14
Electrical equipment	4.40	4.43	0.03
Installed appliances	4.81	4.82	0.01
Other materials	12.23	12.38	0.15

(a) For an explanation of this table see paragraph 15 of the Explanatory Notes

(b) Base of each index: 1989-90 = 100.0

4

HOUSE BUILDING MATERIALS PRICE INDEX(a), By Materials Group

WEIGHTED AVERAGE OF SIX STATE CAPITAL CITIES.....

<i>Period</i>	<i>Concrete mix, cement and sand</i>	<i>Cement products</i>	<i>Ceramic products</i>	<i>Timber, board and joinery</i>	<i>Steel products</i>	<i>Other metal products</i>	<i>Plumbing products</i>	<i>Electrical equipment</i>	<i>Installed appliances</i>	<i>Other materials</i>
1994-95	116.6	114.7	114.3	118.8	113.6	110.1	110.6	109.0	121.9	114.9
1995-96	113.4	116.0	113.7	116.4	115.6	113.0	113.9	116.0	124.6	117.7
1996-97	112.8	116.6	113.1	116.2	118.3	113.6	114.4	115.1	128.7	119.5
1997-98	114.0	117.2	115.2	118.8	120.1	115.3	118.3	115.1	130.4	122.4
1994										
December	116.9	115.1	114.1	118.8	114.6	109.3	109.9	107.3	121.5	114.2
1995										
March	116.8	115.2	114.9	119.3	113.1	111.2	111.1	110.4	122.3	115.0
June	116.1	115.6	115.3	119.3	112.2	112.2	112.4	113.5	123.1	117.0
September	114.9	116.6	115.0	117.4	113.9	112.8	113.5	117.0	123.8	117.9
December	113.9	116.3	113.8	116.4	115.9	112.8	114.3	116.1	123.8	117.2
1996										
March	113.0	115.8	113.1	115.9	116.5	112.7	113.5	115.5	124.5	117.5
June	111.9	115.1	112.9	116.0	116.1	113.5	114.1	115.2	126.1	118.1
September	112.1	116.4	112.9	116.1	117.2	112.4	114.3	115.5	127.5	118.6
December	112.3	116.5	112.9	116.0	118.0	113.4	113.4	114.7	128.4	119.1
1997										
March	113.0	116.9	113.0	115.8	118.7	114.1	113.6	114.8	129.5	119.2
June	113.9	116.5	113.7	116.9	119.1	114.3	116.3	115.5	129.3	121.1
September	114.2	116.2	114.3	117.3	119.1	114.6	117.9	115.0	130.0	121.3
December	114.2	117.1	114.4	118.3	120.1	115.1	118.2	114.9	130.8	122.1
1998										
March	113.9	117.9	115.8	119.9	120.6	115.0	119.0	114.6	130.0	122.5
June	113.8	117.7	116.1	119.8	120.5	116.5	118.2	115.7	130.6	123.5
September	113.4	117.6	117.0	121.0	119.0	116.8	117.7	115.6	130.7	124.0
December	113.1	117.5	116.9	121.3	120.4	117.3	115.8	116.3	130.9	125.5

(a) Base of each index: 1989-90 = 100.0

EXPLANATORY NOTES

INTRODUCTION

1 This publication presents index numbers measuring changes in the prices of selected materials used in the construction of houses in the Statistical Division for each State capital city—the *Price Index of Materials Used in House Building*. It is calculated on a reference base of 1989–90 = 100.0 for the six State capital cities.

SCOPE

2 A house is defined as a detached building predominantly used for long-term residential purposes and consisting of only one dwelling unit. The index does not represent buildings of any kind other than detached houses.

ITEMS AND WEIGHTS

3 The index is a fixed weights index. The items and weights were derived from reported values of each material used in selected representative houses constructed in the 3 years ending 1992–93. Each capital city has an individual weighting pattern which reflects the differences in the relative usage of different materials in the various cities and differences in price levels between the cities.

4 The weighting pattern for the six State capital cities is set out in Appendix A of the December 1995 issue of this publication.

PRICE MEASUREMENT

5 Prices used relate to precise standards for each material. The aim of the index is to measure price changes for materials of constant quality.

6 In general, the point of pricing is ‘delivered on site’. However, in some cases it is necessary to use the nearest realistic price available, e.g. that for materials supplied and fixed. Prices are obtained in each capital city from representative suppliers of materials used in house building.

7 As far as possible, actual transaction prices are used in this index—that is, prices actually paid by building contractors or sub-contractors to material suppliers for materials delivered on building sites. The actual price paid for anything can be described in various ways. Instead of being described as a single price (as usually happens in retail shops) a price for a building material may be described in terms of the components that make up the price—for instance ‘list price plus sales tax’, ‘suppliers price plus freight’, ‘basic price less (particular types of) discount’ and so on. It is these net prices that the ABS aims to use in compiling this price index.

8 The ABS asks respondent businesses to report details of the discounts they offer so that actual transaction prices can be calculated. However, as building material suppliers offer many different types of discounts to buyers (e.g. trade discounts, settlement discounts, quantity discounts, competitive discounts), the identification of discounts and the way in which they are applied by sellers pose considerable problems for the ABS. To the extent that discounts are identified and measured, their effects are taken into account in calculating the index. Sometimes new discounts, or changes in the way discounts are applied by sellers, are identified only after index numbers for a period have been published. In such cases, or in any other case where it has been discovered that incorrect prices have been used in compiling the indexes, revisions to index numbers may occur in subsequent issues of this publication.

9 Sales taxes levied on building materials are included in the prices used to compile this index. Materials used in the construction of Commonwealth, State and Local Government owned houses are exempt from sales tax. At any particular time, when there is a change in the rate of sales tax on building materials, the index is calculated to take into account the proportions of materials sold subject to sales tax at that time and the proportion of materials exempt from sales tax.

EXPLANATORY NOTES

INDEX NUMBERS

10 Index numbers for financial years are simple averages of the quarterly index numbers.

11 The separate city indexes measure price movements within each capital city individually. They enable comparisons to be drawn between cities as to *differences in degree of price movement* from period to period. They do not measure differences in price levels between cities.

REVISIONS

12 In cases where more complete information is obtained after index numbers for a period have been published, or it is discovered that incorrect prices have been used in compiling the indexes, revisions to index numbers may occur in subsequent issues of this publication.

ANALYSIS OF INDEX CHANGES

13 Care should be exercised when interpreting quarter-to-quarter movements in the indexes as short-term movements do not necessarily indicate changes in trend.

14 Movements in indexes from one period to another can be expressed either as changes in 'index points' or as percentage changes. The following example illustrates the method of calculating index points changes and percentage changes between any two periods:

Weighted average of six State
capital cities index numbers —

December Quarter 1998 119.7 (See Table 1)

less December Quarter 1997 117.9 (See Table 1)

Change in index points 1.8

Percentage change $\frac{1.8}{117.9} \times 100 = 1.5$

15 Table 3 provides an analysis of the contribution which selected categories of materials make to the total Weighted average of six State capital cities index. For example, Timber, board and joinery contributed 33.03 index points to the total Weighted average of the six State capital cities index number of 119.7 for the December Quarter 1998 and 0.10 index points to the net change of 0.3 index points.

FURTHER INFORMATION

16 The Appendix to the December 1995 issue of this publication contains a more detailed description of the index and its relationship with previous indexes.

17 Further information on the index is presented in the publication *Producer and Foreign Trade Price Indexes: Concepts, Sources and Methods* (Cat. no. 6419.0).

RELATED PUBLICATIONS

18 Users may also wish to refer to the following price index publications which are available from ABS Bookshops:

- *Price Index of Materials Used in Building Other than House Building, Six State Capital Cities* (Cat. no. 6407.0)
- *Price Indexes of Materials Used in Manufacturing Industries, Australia* (Cat. no. 6411.0)
- *Price Indexes of Articles Produced by Manufacturing Industry, Australia* (Cat. no. 6412.0).

EXPLANATORY NOTES

RELATED PUBLICATIONS

continued

19 Other ABS publications that may be of interest include:

- *Average Weekly Earnings, States and Australia* (Cat. no. 6302.0).

20 Current publications produced by the ABS are listed in the *Catalogue of Publications and Products, Australia* (Cat. no. 1101.0). The ABS also issues, on Tuesdays and Fridays, a *Release Advice* (Cat. no. 1105.0) which lists publications to be released in the next few days. The Catalogue and Release Advice are available from any ABS office.

UNPUBLISHED STATISTICS

21 As well as the statistics included in this and related publications, the ABS may have other relevant unpublished data available. Inquiries should be made to Robert Adams on 02 6252 6198 or to any ABS office.

SYMBOLS AND OTHER USAGES

r revised

SELF-HELP ACCESS TO STATISTICS

PHONE Call 1900 986 400 for the latest statistics on CPI, Labour Force, Earnings, National Accounts, Balance of Payments and other topics (call cost is 75c per minute).

INTERNET <http://www.abs.gov.au>

LIBRARY A range of ABS publications is available from public and tertiary libraries Australia wide. Contact your nearest library to determine whether it has the ABS statistics you require.

WHY NOT SUBSCRIBE?

PHONE +61 1300 366 323

FAX +61 03 9615 7848

CONTACTING THE ABS

ABS provides a range of services, including: a telephone inquiry service; information consultancy tailored to your needs; survey, sample and questionnaire design; survey evaluation and methodological reviews; and statistical training.

<i>INQUIRIES</i>	<i>By phone</i>	<i>By fax</i>
Canberra	02 6252 6627	02 6253 1404
Sydney	02 9268 4611	02 9268 4668
Melbourne	03 9615 7755	03 9615 7798
Brisbane	07 3222 6351	07 3222 6283
Perth	08 9360 5140	08 9360 5955
Adelaide	08 8237 7100	08 8237 7566
Hobart	03 6222 5800	03 6222 5995
Darwin	08 8943 2111	08 8981 1218

POST Client Services, ABS, PO Box 10, Belconnen, ACT 2616



2640800012988

ISSN 1031-394X

RRP \$15.00

© Commonwealth of Australia 1999

Produced by the Australian Bureau of Statistics